

ΣΕΙΣΜΟΣ ΛΗΜΝΟΥ

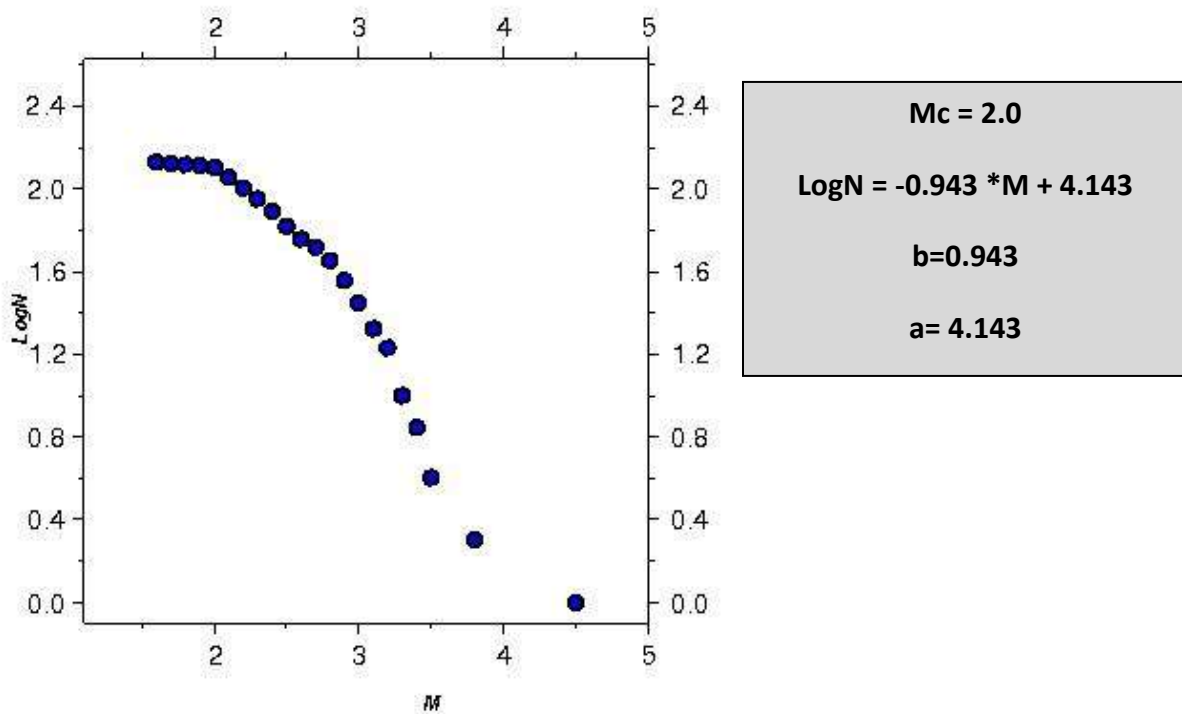
(08/01/2013, 14:16 GMT, M=5.9)

Έπειτα από την τελευταία ενημέρωση (Last event : 11/01/2013, 13:36:24 GMT) του καταλόγου της ακολουθίας του σεισμού της Λήμνου προέκυψαν τα ακόλουθα:

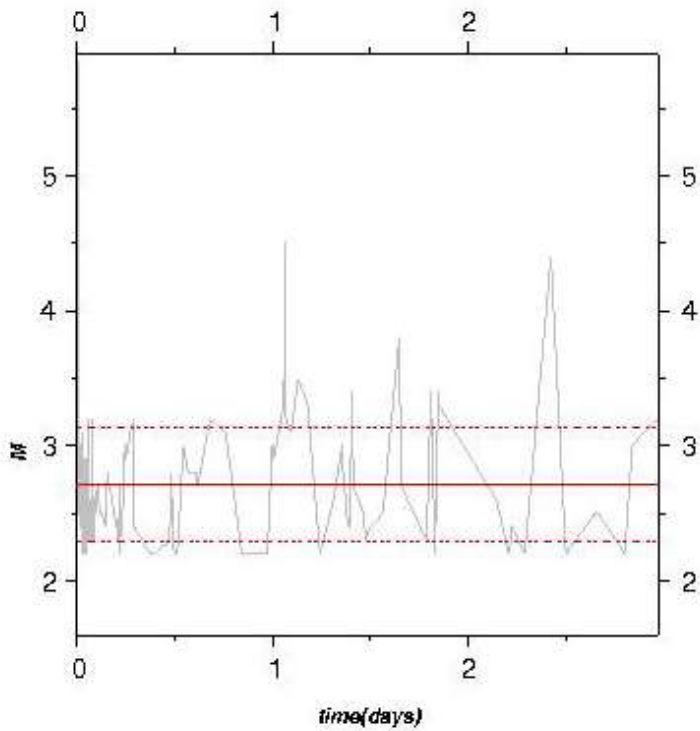
Ε. Τέζα

Μ. Σκορδύλης

G-R distribution



Mean magnitude



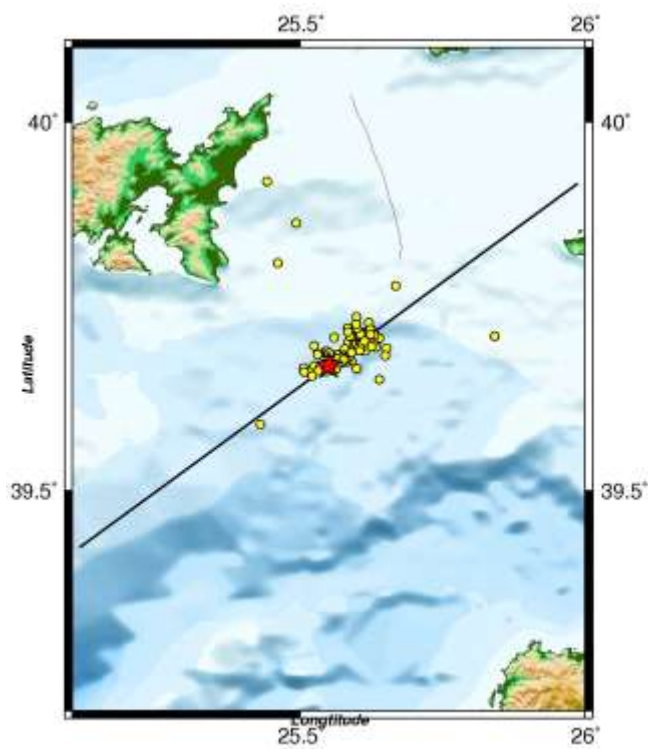
Mmean = 2.72

SD= 0.426

Mmean+SD = 3.141

Mmean-SD = 2.294

Seismicity map



Date: 08/01/2013

Time: 14:16:08

★ M = 5.9

Latitude = 39.6700

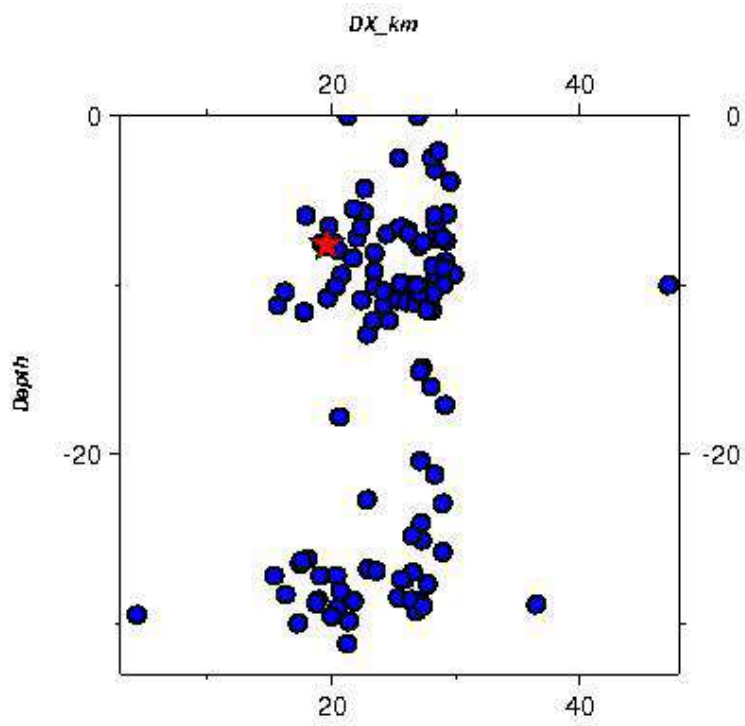
Longitude = 25.5500

Depth = 7.60 km

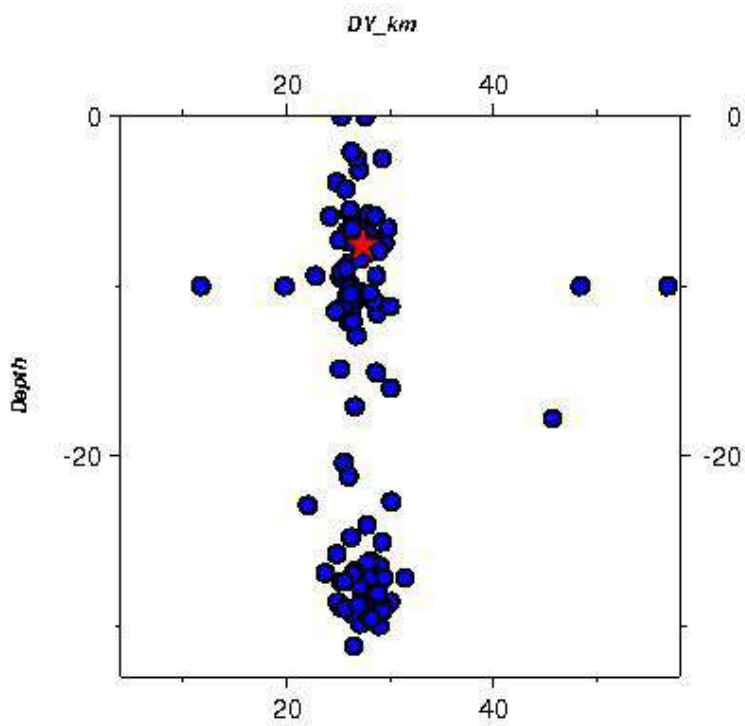
L (M)= 14.421 km

Azimuth = 53.69

Along-strike section

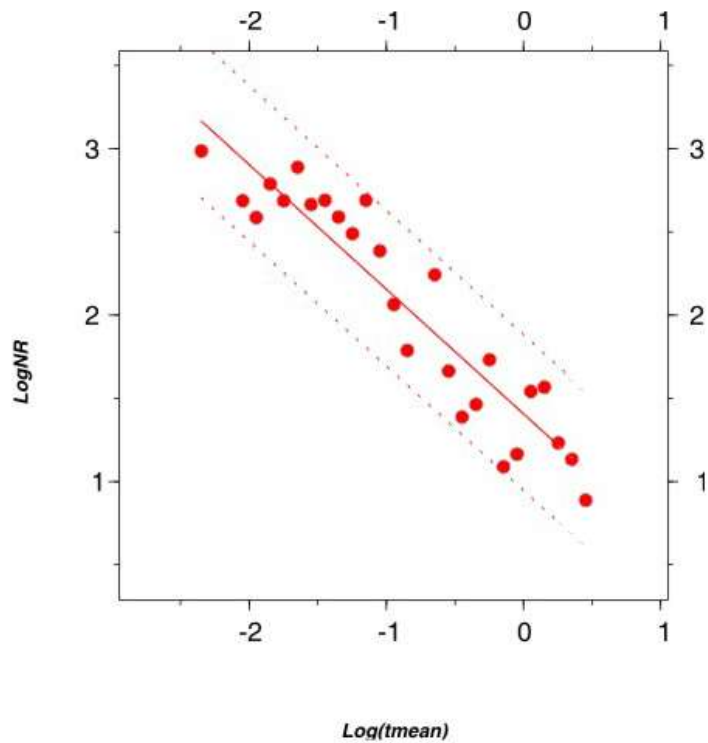


Cross-strike section



Fault dip almost vertical

Time distribution



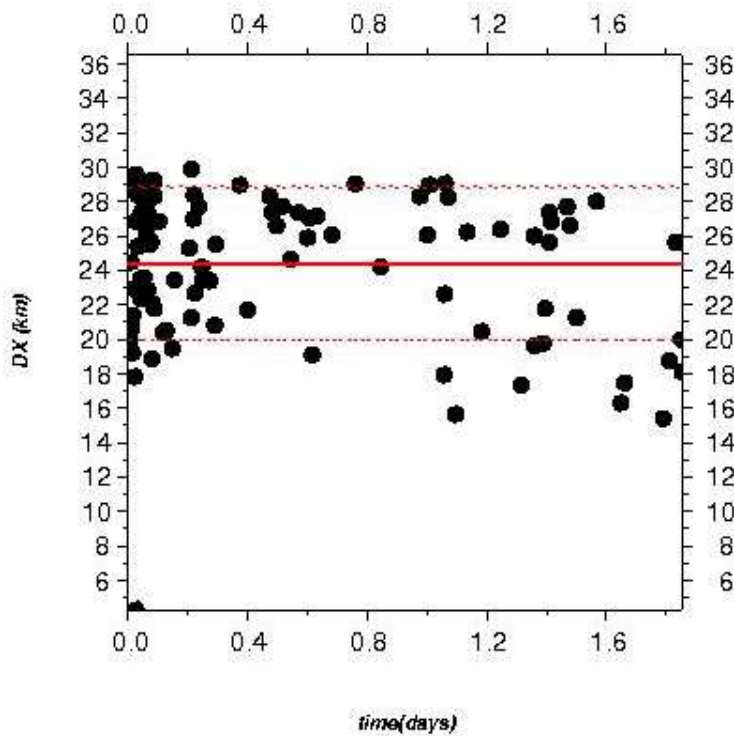
fit 48h: $y = -0.75 * x + 1.41$

fit 48h 95%

1st : $y_1 = -0.75 * x + 1.86$

2nd : $y_2 = -0.75 * x + 0.95$

Space-time distribution



Mean DX = 24.37 km

SD = 4.45 km

Mean DX + SD = 28.82 km

Mean DX - SD = 19.93 km

$L = 2 * SD = \sim 9 \text{ km}$

$L(M) = 14 \text{ km}$