

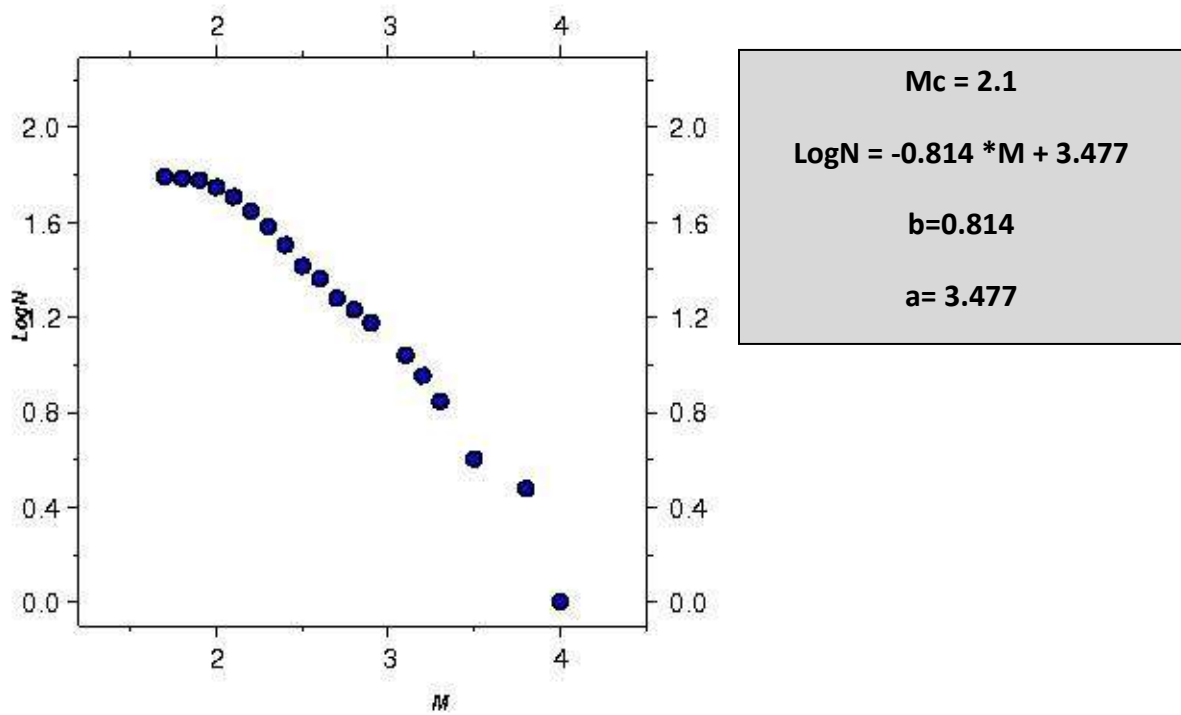
## ΣΕΙΣΜΟΣ ΧΑΝΙΩΝ 12/10/2013

Έπειτα από την συμπλήρωση του 1<sup>ου</sup> 48ωρου της ακολουθίας του σεισμού των Χανίων (Last event : 2013 10 15 04:46:10) προέκυψαν τα ακόλουθα:

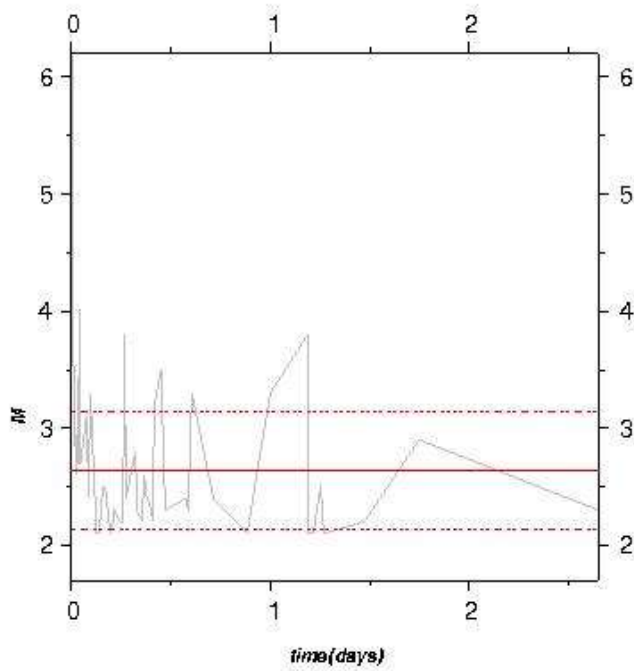
Ε. Τέζα

Μ. Σκορδύλης

### G-R distribution



## Mean magnitude



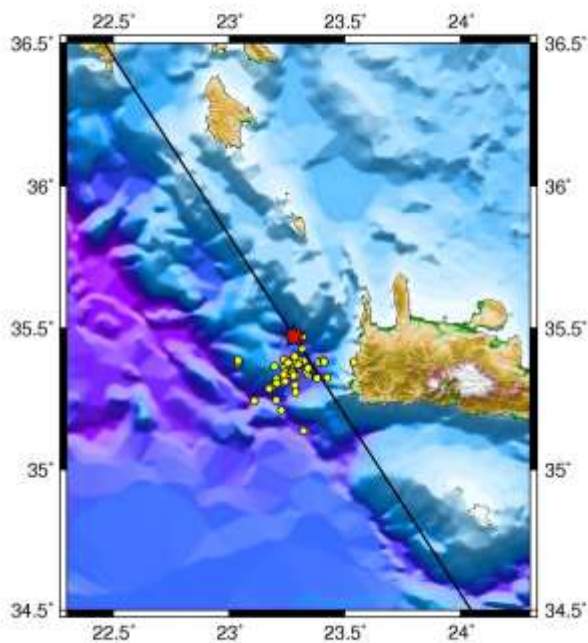
**Mmean = 2.64**

**SD= 0.496**

**Mmean+SD = 3.136**

**Mmean-SD = 2.140**

## Seismicity map



**Date: 12/10/2013**

**Time: 13:11:54**

**★ M = 6.2**

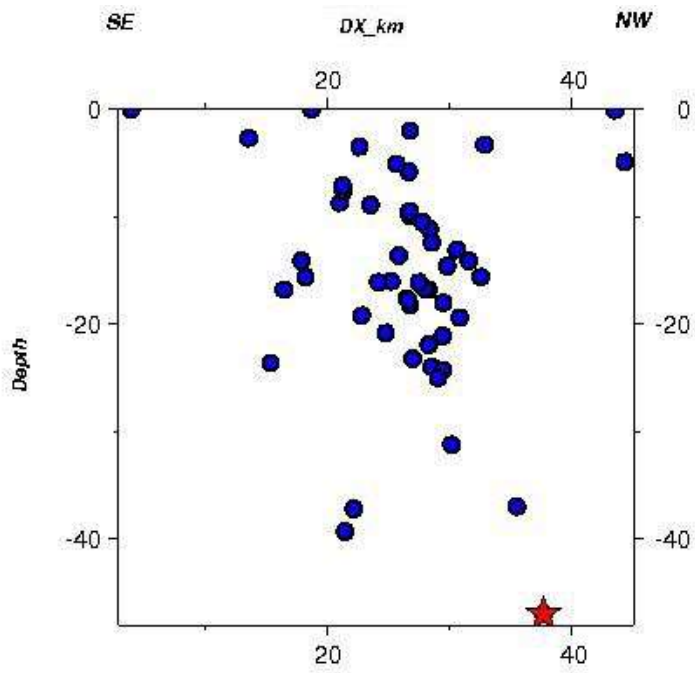
**Latitude = 35.4710**

**Longitude = 23.2810**

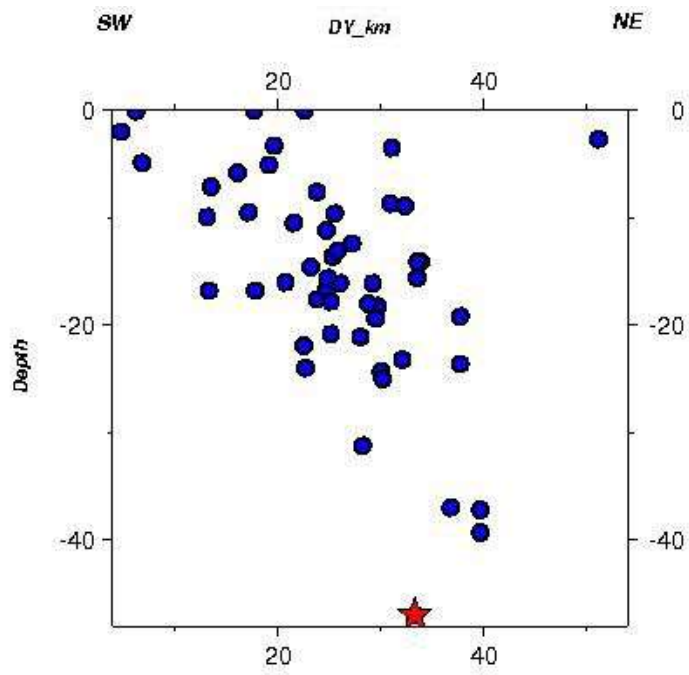
**Depth = 47.00 km**

**Azimuth = 372**

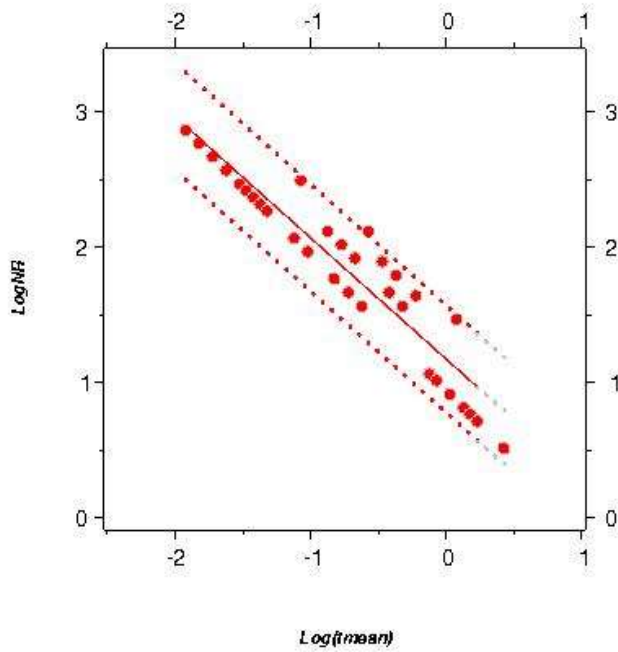
### Along-strike section



### Cross-strike section



## Time distribution



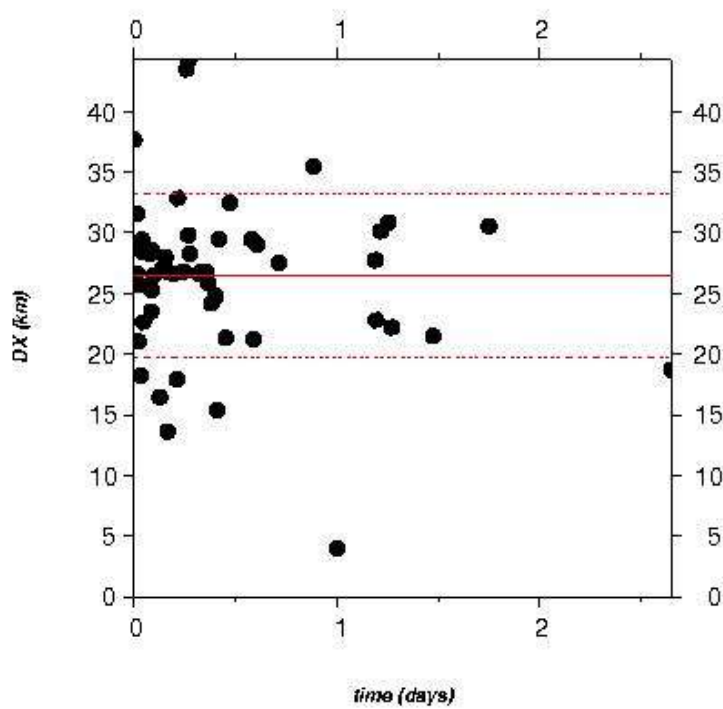
fit 48h:  $y = -0.894 * x + 1.170$

fit 48h 95%

1st :  $y_1 = -0.894 * x + 1.565$

2nd :  $y_2 = -0.894 * x + 0.774$

## Space-time distribution



Mean DX = 26.46 km

SD = 6.69 km

Mean DX + SD = 33.15 km

Mean DX - SD = 19.76 km

L =  $\pm 2 * SD = \sim 26.76$  km